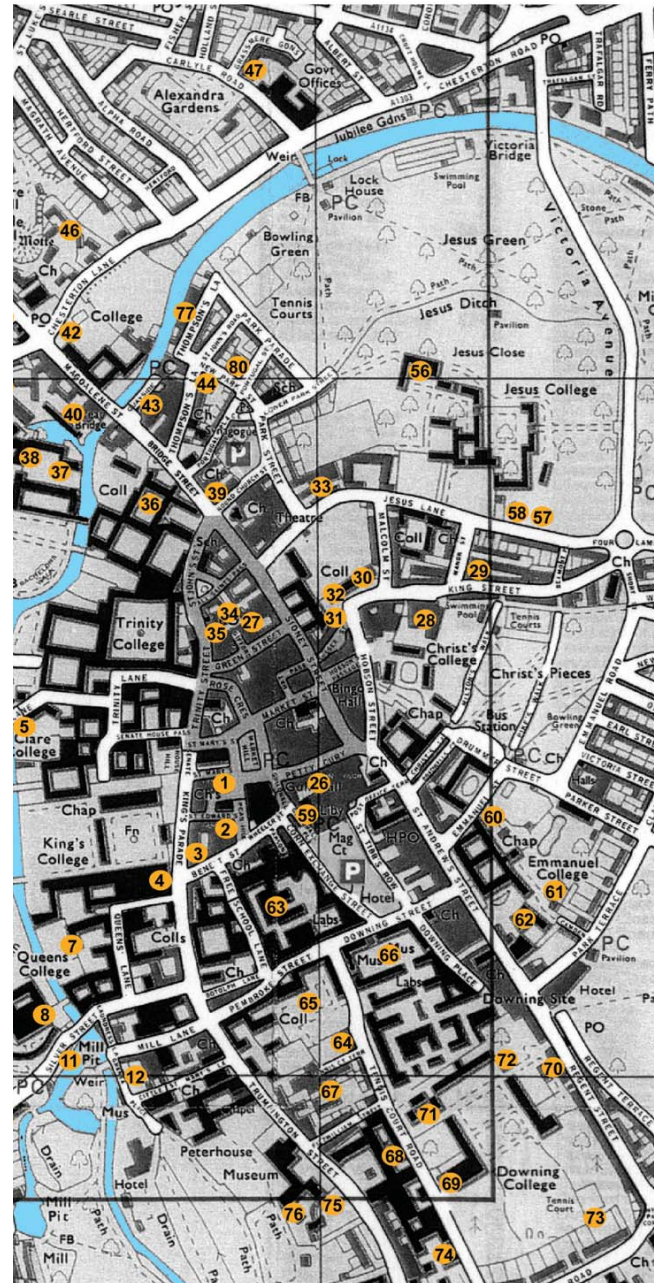
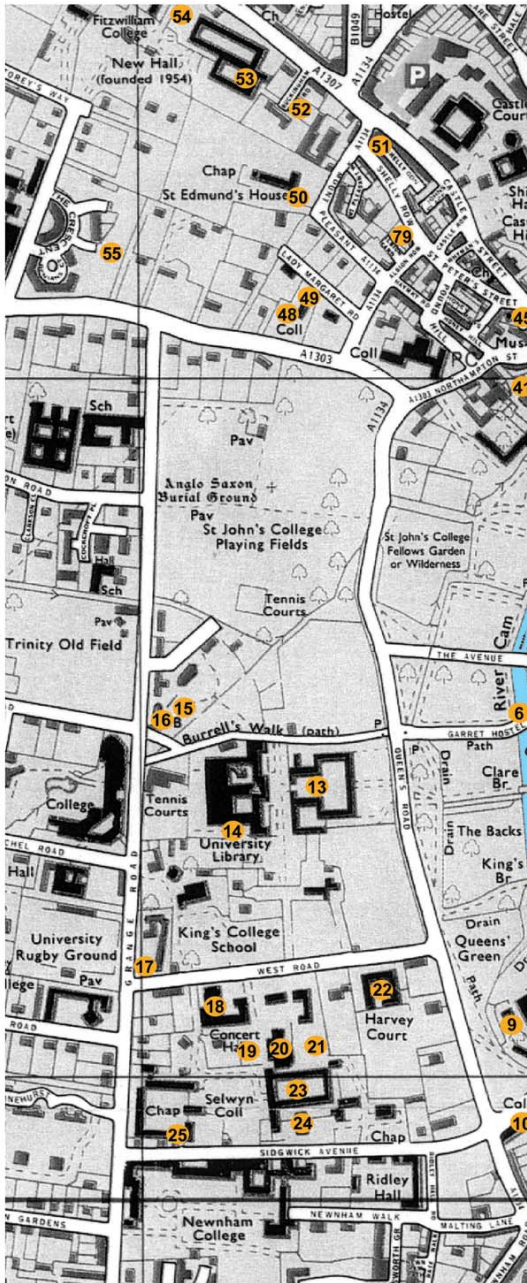


500 metres

MAP 1

CITY CENTRE





1

- A Market Hostel (1962)
- B King's College
- C Architects Co-Partnership
- D Kerridge (Cambridge) Ltd
- E Market Hill
- F View from Market Hill



2

- A Arts Theatre Extension (1996)
- B Cambridge Arts Theatre Trust
- C Bland Brown & Cole
- D Wates Eastern
- E Market Hill
- F Public theatre
- G photograph by Richard Davies



3

- A Robert Beldam Building (1996)
- B Corpus Christi College
- C Nicholas Hare
- D SDC Builders Ltd
- E Bene't Street
- F via Porter's Lodge and from Eagle public house
- G Civic Trust Commendation 1997



4

- A King's Lane Development (1967)
- B King's and St Catharine's Colleges
- C James Cubitt and Partners
- D Bovis Construction
- E King's Lane/Trumpington Street
- F View from King's Lane/Trumpington Street



5

- A Jerwood Library (1999)
- B Trinity Hall
- C Freeland Rees Roberts
- D York Construction Ltd
- E within College/Garret Hostel Lane
- F via Porter's Lodge and
- view from Garret Hostel Bridge
- G Civic Trust Commendation 2001



6

- A Garret Hostel Bridge (1960)
- B Cambridge City Council
- C Timothy Morgan (Guy Morgan and Partners)
- D J. L. Kier Ltd
- E Garret Hostel Lane
- F Public footpath
- G Listed Grade II



7

- A Erasmus Building (1960)
- B Queens' College
- C Sir Basil Spence and Partners
- D William Sindall Ltd
- E within College
- F via Porter's Lodge



8

- A Cripp's Court (1978)
- B Queens' College
- C Powell Moya
- D John Laing
- E within College
- F via Porter's Lodge



9

- A Fitzpatrick Hall (1990)
- B Queens' College
- C Bland Brown and Cole
- D Sir Robert McAlpine
- E within College
- F via Porter's Lodge



10

- A Rayne Building (1970)
 - B Darwin College
 - C Howell, Killick and Partridge, Amis
 - D Kerridge (Cambridge) Ltd
 - E within College/Silver Street
 - F via Porter's Lodge/Silver Street
 - G Civic Trust Commendation 1971
- There are two elements to the scheme, the residential building and a new dining hall.



11

- A Study Centre (1994)
- B Darwin College
- C Jeremy Dixon, Edward Jones
- D Mowlem, Rattee and Kett
- E within College/Silver Street/Mill Pit
- F via Porter's Lodge/Silver Street/Mill Pit
- G RIBA Award 1994



12

- A The University Centre (1967)
 - B University of Cambridge
 - C Howell, Killick, Partridge and Amis
 - D William Sindall Ltd
 - E Granta Place
 - F view from Granta place and by arrangement
 - G Civic Trust Commendation 1968
- There are interesting distant views from across the adjoining Common.



13

- A Forbes-Mellon Library (1985)
- B Clare College
- C Arup Associates
- D William Sindall Ltd
- E off Queen's Road
- F via Porter's Lodge
- G The building faces the main entrance of the University Library on the same axis.



14

- A Extensions to University Library (1966, 1999 – 2001)
- B University of Cambridge
- C Gollins, Melvin, Ward (1966) Harry Faulkner-Brown Howe Partnership (1999 – 2001)
- D Rattee and Kett (1966) R G Carter Ltd (2001)
- E University Drive/Grange Road
- F by arrangement



15

- A Burrells Field (1995)
- B Trinity College
- C MacCormac Jamieson Prichard
- D Johnson and Bailey/Marriott Construction Ltd
- E within College/Burrells Walk
- F via Porter's Lodge
- G RIBA Award 1997 Civic Trust Award 1997 see also 16 below



16

- A Adrian and Butler Houses (1978)
- B Trinity College
- C David Roberts and Geoffrey Clarke
- D Coulson and Son
- E within College/Grange Road
- F via Porter's Lodge
- G see also 15 above



17

- A St Chads (1978)
- B St Catharine's College
- C James Cubitt and Partners
- D William Sindall Ltd
- E within College/Grange Road
- F via Porter's Lodge
- G An additional floor was added in 1999 by the same architects, built by Hutton Construction



18

- A School of Music (1977)
- B University of Cambridge
- C Sir Leslie Martin with Colen Lumley and Ivor Richards
- D Coulson and Son
- E West Road
- F by arrangement



19

- A School of Divinity (2000)
- B University of Cambridge
- C Edward Cullinan Architects
- D Sindall
- E off West Road
- F by arrangement
- G RIBA Award 2001



20

- A Faculty of History, Library (1967)
- B University of Cambridge
- C James Stirling
- D William Sindall Ltd
- E off West Road
- F by arrangement
- G RIBA Award 1970
Listed Grade II



21

- A Faculty of Law, Library (1995)
- B University of Cambridge
- C Foster and Partners
- D Taylor Woodrow Construction (Southern)
- E off West Road
- F by arrangement



22

- A Harvey Court (1962)
- B Gonville and Caius College
- C Sir Leslie Martin and Colin St John Wilson
- D William Sindall Ltd
- E West Road
- F via Porter's Lodge
- G Listed Grade II



23

- A Faculty of Arts (1956-64)
- B University of Cambridge
- C Casson Conder and Partners
- D Johnson and Bailey Ltd/ Kerridge (Cambridge) Ltd
- E Sidgwick Avenue
- F by arrangement
- G Listed Grade II



24

- A Lady Mitchell Hall (1964)
- B University of Cambridge
- C Casson Conder and Partners
- D Johnson and Bailey Ltd
- E Sidgwick Avenue
- F by arrangement
- G Listed Grade II



25

- A College Kitchens (1981)
- B Selwyn College
- C Purcell Miller and Tritton
- D Rattee and Kett
- E Sidgwick Avenue
- F via Porter's Lodge
- G Combination Rooms by RMJM (1963) are adjacent



26

- A Lion Yard Shopping Centre (1979)
- B Land Securities/Ravenseft Properties
- C Arup Associates
(Fewster and Partners executive architects)
- D Bovis Construction Ltd
- E Petty Cury/St Andrews Street
- F Public shopping centre
- G Refurbished in 2001



27

- A Blue Boar Court (1989)
- B Trinity College
- C MacCormac Jamieson Prichard and Wright
- D Johnson and Bailey Ltd
- E within College, Green Street/Trinity Street
- F via Porter's Lodge
- G RIBA Award 1991



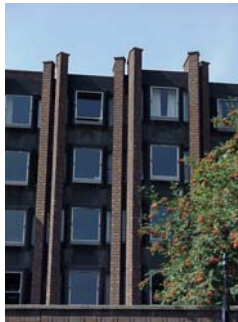
28

- A New Court (1966)
- B Christ's College
- C Denys Lasdun and Partners
(later alterations by Architects Design Partnership)
- D John Mowlem Ltd (Mowlem, Rattee and Kett)
- E within College/King Street
- F via Porter's Lodge



29

- A King Street Housing (1978)
- B King Street Housing Society
- C Ivor Smith and Cailey Hutton
- D Johnson and Bailey Ltd
- E King Street
- F private residences



30

- A Blundell Court (1969)
- B Sidney Sussex College
- C Howell, Killick, Partridge and Amis
- D Marshall-Andrew
- E Malcolm Street/King Street
- F via Porters Lodge



31

- A Bridge over Sussex Street (1991)
- B Sidney Sussex College
- C Pleasance Hookham and Nix
- D Johnson and Bailey Ltd
- E Sussex Street
- F view from street



32

- A The Mong Building (1999)
- B Sidney Sussex College
- C Saunders Boston
- D Sindall
- E within College
- F via Porter's Lodge



33

- A Wesley House (1972)
- B Wesley House
- C Whitworth and Hall
- D Mowlem, Rattee and Kett
- E Jesus Lane
- F via Porter's Lodge



34

- A Wolfson Court (1972)
- B Trinity College
- C Architects Co-Partnership
- D William Sindall Ltd
- E within College/Trinity Street
- F via Porter's Lodge
- G refurbishment and extension by 5th Studio 2006



35

- A Heffers Bookshop (1972)
- B Heffers Ltd
- C Austin-Smith: Lord
- D Wiltshiers Ltd
- E Trinity Street
- F public bookshop (now trading as Blackwells)



36

- A College Library (1993)
- B St John's College
- C Edward Cullinan Architects
- D R G Carter Ltd
- E within College
- F via Porter's Lodge
- G RIBA Award 1995



37

- A Cripp's Court (1967)
- B St John's College
- C Powell Moya
- D John Laing
- E within College
- F via Porter's Lodge
- G RIBA Award 1967
Civic Trust Award 1968



38

- A The Fisher Building (1987)
- B St John's College
- C Saunders Boston
- D Shepherd Construction
- E within College
- F via Porter's Lodge
- G see 36 and 37 within the College



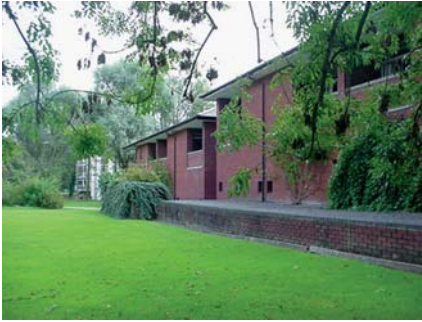
39

- A Bridge House (1978)
- B Scottish Mutual Assurance Co
- C Saunders Boston
- D R G Carter Ltd
- E Bridge Street
- F shops and offices
- G Civic Trust Commendation 1978
Shopfronts have been retained with new commercial development at the rear



40

- A Benson Court (1958)
- B Magdalene College
- C David Roberts
- D Coulson and Son/Kidman and Son
- E within College
- F via Porter's Lodge
- G Civic Trust Commendation 1971



41

- A Buckingham Court (1969)
- B Magdalene College
- C David Roberts and Geoffrey Clarke
- D Johnson and Bailey Ltd
- E within College
- F via Porter's Lodge
- G pitched roof added at a later date
Civic Trust commendation 1971



42

- A Master's Lodge (1967)
- B Magdalene College
- C David Roberts and Geoffrey Clarke
- D Kerridge (Cambridge) Ltd
- E within College
- F via Porter's Lodge
- G pitched roof added at a later date



43

- A Quayside Shops and Offices (1989)
- B Trafford Park Estates/Magdalene College
- C Nicholas Ray Associates
- D Sir Robert McAlpine
- E Bridge Street
- F public plaza



44

- A Bishop Bateman Court (1982)
- B Trinity Hall
- C Cambridge Design
- D Johnson and Bailey Ltd
- E Thompsons Lane
- F via Porter's Lodge
- G RIBA Award 1984



45

- A Extensions to Kettles Yard (1970 and 1994)
- B University of Cambridge
- C 1970 Sir Leslie Martin and David Owers
1994 Bland Brown and Cole
- D 1970 Kidman and Son
1994 Mowlem Rattee and Kett
- E Castle Hill
- F public Art Gallery
- G Civic Trust Commendation 1971

46

- A Clare Colony (1958)
- B Clare College
- C David Roberts
- D Kerridge (Cambridge) Ltd
- E Chesterton Road
- F via Porter's Lodge

47

- A Grasmere Gardens (1981)
- B Granta Housing Society
- C Cambridge Design
- D John Brignell Ltd
- E Carlyle Road
- F private residences
- G Civic Trust Commendation 1982

48

- A College Library (1999)
- B Lucy Cavendish College
- C Freeland Rees Roberts
- D Mowlem Rattee and Kett
- E within College
- F via Porters Lodge



49

- A Dining Hall and Residences (1995)
- B Lucy Cavendish College
- C van Heyningen and Haward
- D Sindall Ltd
- E within College
- F via Porter's Lodge



50

- A Tower Building (1992)
- B St Edmunds College
- C Roderick Gradidge
(Charter Partnership executive architects)
- D Amey Building Ltd
- E within College grounds/Mount Pleasant
- F via Porter's Lodge
- G also new West Residential Building (2001)
by Bland Brown and Cole/SDC Builders Ltd



51

- A Shelly Garden (1983)
- B Granta Housing Society
- C Cambridge Design
- D John Brignell Ltd
- E Shelly Row
- F private residences
- G Civic Trust Commendation 1984



52

- A Buckingham House (2001)
- B New Hall
- C R H Partnership
- D Llewellyn Construction Ltd
- E Buckingham Road
- F via Porter's Lodge



53

- A New Hall (1962-66) and later additions (1995)
- B New Hall
- C Chamberlin Powell and Bon, Austin-Smith: Lord (1995), R H Partnership (2003)
- D W C French Ltd (1962-66), Kajima (1995), Sindall (2003)
- E within College
- F via Porter's Lodge
- G Listed Grade II*



54

- A Kaetsu Centre (1996)
- B Kaetsu Foundation
- C Austin-Smith: Lord
- D Kajima
- E within College/Huntingdon Road
- F via Porter's Lodge



55

- A Thomas House, 'Willow Tree House' (1999)
- B Mr and Mrs Thomas
- C R H Partnership
- D Coulson and Son
- E Larmor Drive, off The Crescent, Storey's Way
- F private residence



56

- A North Court (1965)
- B Jesus College
- C David Roberts
- D Rattee and Kett
- E within College
- F via Porter's Lodge
- G Listed Grade II



57

- A Library Court (2000)
- B Jesus College
- C Evans and Shalev
- D Mowlem Rattee and Kett
- E within College
- F via Porter's Lodge



58

- A Quincentenary Library (1998)
- B Jesus College
- C Evans and Shalev
- D Coulson and Son
- E within College
- F via Porter's Lodge
- G RIBA Award 1996



59

- A Fisher House (1976)
- B University of Cambridge Catholic Chaplaincy
- C Gerard Goalen and Partner
- D Rattee and Kett
- E Guildhall Place
- F by arrangement



60

- A The Queen's Building (1996)
- B Emmanuel College
- C Michael Hopkins and Partners
- D Sir Robert McAlpine
- E within College
- F via Porter's Lodge
- G RIBA Award 1996



61

- A Library wing extension (1966)
- B Emmanuel College
- C Cruikshank Seward
- D Kerridge (Cambridge) Ltd
- E within College
- F via Porter's Lodge



62

- A South Court (1966)
- B Emmanuel College
- C Tom Hancock
- D Johnson and Bailey Ltd
- E within College
- F via Porter's Lodge
- G also see Masters lodge by Hancock



63

- A New Museums site (1971)
- B University of Cambridge
- C Arup Associates
- D Trollope and Colls and William Sindall Ltd
- E Downing Street/Corn Exchange Street
- F by arrangement



64

- A Foundress Court (1997)
- B Pembroke College
- C Eric Parry Architects
- D R G Carter Ltd
- E within College
- F via Porter's Lodge
- G RIBA Award 1998
Civic Trust Commendation 1999



65

- A Orchard Building (1958)
- B Pembroke College
- C Marshall Sisson
- D unknown
- E within College
- F via Porter's Lodge



66

- A MacDonald Institute for Archaeological Research (1994)
- B University of Cambridge
- C Casson Conder and Partners
- D Amec Construction
- E Downing Street / Tennis Court Terrace
- F by arrangement
- G Civic trust Commendation 1995



67

- A Cosin Court (1970)
- B Peterhouse
- C David Roberts
- D Coulson and Son
- E within College
- F via Porter's Lodge



68

- A Judge Institute of Management Studies (1994)
- B University of Cambridge
- C John Outram
(Fitzroy Robinson executive architects)
- D Laing (Eastern)
- E Trumpington Street
- F by arrangement
- G RIBA Award 1996 Civic Trust Award 1997



69

- A Senior Combination Room (1969)
- B Downing College
- C Howell, Killick, Partridge and Amis
- D Coulson and Son
- E within College
- F via Porter's Lodge
- G RIBA Award 1971



70

- A Parker's House (1984)
- B Downing College / Miller Buckley Developments
- C Hughes and Bicknell
- D Miller Buckley Construction
- E Regent Street
- F private offices and shops
- G see Richmond House (1989) by Erith and Terry / Coulson and Son North of the College gates



71

- A Butterfield Building (1987)
- B Downing College
- C Erith and Terry
- D Coulson and Son
- E within College
- F via Porter's Lodge



72

- A Maitland Robinson Library (1991)
- B Downing College
- C Erith and Terry
- D R G Carter Ltd
- E within College
- F via Porter's Lodge
- G also see The Howard Building by Erith and Terry



73

- A The Singer Building (2000)
- B Downing College
- C Bland Brown and Cole
- D F W Cocksedge Ltd
- E within College
- F via Porter's Lodge



74

- A Department of Biochemistry (1997)
- B University of Cambridge
- C R H Partnership
- D Marriott
- E Tennis Court Terrace
- F by arrangement



75

- A Adeane and Rothschild Galleries (1965)
- Fitzwilliam Museum
- B University of Cambridge
- C David Roberts
- D Coulson and Son
- E Trumpington Street
- F public museum



76

- A William Stone Building (1964)
- B Peterhouse
- C Sir Leslie Martin and Colin St John Wilson
- D Kerridge (Cambridge) Ltd
- E within College
- F via Porter's Lodge
- G Listed Grade II



77

- A Beaufort Place (1985)
- B Aquila Investments Ltd
- C Dixon Del Pozzo
- D Johnson and Bailey Ltd
- E Thompsons Lane
- F private residences



78

- A Architects Office (1986)
- B St Johns College
- C Bland Brown and Cole
- D Wetzl Brewer and Jackson
- E 33a Bridge Street
- F by arrangement



79

- A Shelley Row (1987)
- B Cambridge City Council
- C Cambridge City Council Architects Department
- D H C Moss Ltd
- E Shelly Row / Castle Row/Albion Row
- F private residences



80

- A Portugal Street (1996)
- B Aquila Investments Ltd
- C Barber Casanovas Ruffles
- D Sindall Ltd
- E Portugal Street
- F private residences